



valken.

VISIT US VALKEN.COM

POINT

PHANTOM
AGILITY

VSS

CODE PROFIT



Valken Sports was founded in 2008, headquartered in Swedesboro, New Jersey. We at Valken, are the same guys who created most of the paintball technologies we take for granted these days. We're the pioneers behind your electronic loaders and battery powered markers. Our paintball line offers a variety of high quality products you will need to go out and play; from apparel and protective gear, down to the paint itself. Whenever you play paintball, play with Valken®.

NEW JERSEY **HQ** 
1 Hawk Ct.
Swedesboro, NJ 08085

ARKANSAS
2505 South Thompson
Suite# W-6
Springdale, AR 72762

CANADA - ON
95 Bessemer Road Unit 6
London, ON N6E 1P9

COLORADO
5017 N. 30th St.
Colorado Springs, CO 80919

EUROPE
Schuttevaerweg 98
3044 BB Rotterdam
The Netherlands

CANADA - QC
5345 Albert Millichamp. Unit 1.
Ville Saint Hubert, Quebec. J3Y 8Z8

CALIFORNIA
8333 Arjons Dr. Suite B
San Diego, CA 92126

UNITED KINGDOM
Unit 3 Lancaster Way
Earls Colne Business Park
Earls Colne, Essex, C06 2NS

valken.com
(866) 978-2553

TABLE OF CONTENTS

» PG.4	PAINTBALLS	» PG.73	BAGS
» PG.11	MARKERS	» PG.77	CASES
» PG.18	LOADERS	» PG.79	ACCESSORIES
» PG.27	TANKS	» PG.85	FIELD
» PG.30	GOGGLES		
» PG.36	GOTCHA		
» PG.44	PHANTOM AGILITY APPAREL		
» PG.48	FATE APPAREL		
» PG.50	KILO APPAREL		
» PG.52	TANGO APPAREL		
» PG.54	HARNESSES		
» PG.60	PHANTOM AGILITY PROTECTION		
» PG.65	GLOVES		
» PG.69	PROTECTIVE GEAR		

**WHATEVER
IT TAKES.™**



THE CHOICE OF PROFESSIONAL PAINTBALL PLAYERS

REDEMPTION PRO PAINT

FEATURES

- 100% PEG
- No starch, no oil
- Extreme metallic shell
- Extremely bright fill
- Tournament level breakability

SHAPE 10/10

FILL COLOR 10/10

BRITTLINESS 10/10

FILL DENSITY 10/10

WORLD'S TOP OF THE LINE PAINT

REDEMPTION PAINT

FEATURES

- 100% PEG
- Fill bright and thick
- No starch, no oil
- Perfect for high stakes tournaments
- No missing a redemption ball break

SHAPE 10/10

FILL COLOR 10/10

BRITTLINESS 9/10

FILL DENSITY 10/10



WORLD'S MOST POPULAR PAINTBALL

GRAFFITI PAINT

FEATURES

- 100% PEG
- Striped Shell
- No oil
- Most dependable on the market
- Perfect for *Magfed* scenarios

SHAPE 10/10

FILL COLOR 9/10

BRITTLINESS 8/10

FILL DENSITY 10/10



THE NEWEST QUALITY LINE OF VALKEN PAINT

NEW WORLD PAINT

FEATURES

- Field protected shell for field use
- Easy clean up, amazing fill
- By same factory as Graffiti
- Not affected by humidity
- Works great for mag-fed players

SHAPE 7/10

FILL COLOR 7/10

BRITTLINESS 8/10

FILL DENSITY 10/10



FIELD PROTECTED SHELLS

FATE FIELD PAINT

FEATURES

- Split shell
- 100% PEG
- No starch, no oil
- Field protected shell
- Slightly more brittle than field grade

SHAPE 9/10

FILL COLOR 7/10

BRITTLINESS 6/10

FILL DENSITY 6/10



EXCELLENT ENTRY-LEVEL PAINTBALLS

FATE PAINT

FEATURES

- 100% PEG
- Easy clean up
- No starch, no oil
- Reliable breakability and shell
- Perfect for recreational play

SHAPE 7/10

FILL COLOR 7/10

BRITTLINESS 8/10

FILL DENSITY 7/10



▶ CATER TO YOUR CUSTOM PAINTBALL NEEDS

RESERVE PAINT

FEATURES

- Available in a variety of colors and shells
- Available in UV for Zombie shoots
- Custom box specifically designed to protect fields, not sold retail
- Cater to your custom paintball needs (min. qty. orders)
- No oil for easy clean up
- High end performance from a reasonable priced paintball

SHAPE 7/10

FILL COLOR 7/10

BRITTLINESS 8/10

FILL DENSITY 7/10

TANGO PAINT

FEATURES

- Bright Shell
- PEG fill
- Spot print box

SHAPE 9/10

FILL COLOR 7/10

BRITTLINESS 6/10

FILL DENSITY 6/10



KILO PAINT

- Robust, Recycled Shell
- PEG Fill
- Camo Box

SHAPE 9/10

FILL COLOR 7/10

BRITTLINESS 6/10

FILL DENSITY 6/10

FIELD PAINT

- Thicker Shell
- 2 Tone shell
- Easy for identification
- only sold to fields
- Very durable

SHAPE 9/10

FILL COLOR 7/10

BRITTLINESS 7/10

FILL DENSITY 6/10

INFINITY PAINT

- Designed for straight shooting
- Affordable
- Full color shell
- Consistent shell color
- Best paintball you can get for the price!

SHAPE 9/10

FILL COLOR 7/10

BRITTLINESS 6/10

FILL DENSITY 6/10



EXCELLENT ENTRY-LEVEL .50cal PAINTBALLS

FATE .50 PAINT

FEATURES

- 100% PEG
- Easy clean up
- No starch, no oil
- Reliable breakability and shell
- Perfect for recreational play

SHAPE	8/10
FILL COLOR	8/10
BRITTLINESS	8/10
FILL DENSITY	9/10



Made of 100% PEG,
safer for the environment



Made of 100% PEG,
safer for the environment

UV RESERVE .50 PAINT

FEATURES

- .50cal paint available in a variety of colors and shells
- Available in UV for Zombie shoots
- No oil for easy clean up
- High end performance from a reasonable priced paintball

SHAPE	8/10
FILL COLOR	8/10
BRITTLINESS	8/10
FILL DENSITY	9/10



CODE

CODE



TITANIUM

#79867

68 CALIBER ELECTRONIC MARKER WITH SIMPLE 1 BUTTON BOLT REMOVAL FOR EASY MAINTENANCE

EASY BOLT REMOVAL



QUICK ACCESS BATTERY DOOR



EASY LEVER ASA



ADJUSTABLE REGULATOR IN FRAME



PROGRAMMABLE ELECTRONICS



CLAMPING FEEDNECK



CODE



BLACK

#79850



ARCTIC BLUE

#92002



MONSTER GREEN

#92019

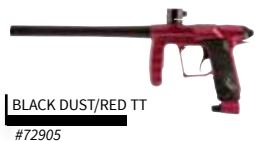
CODE MARKER

FEATURES

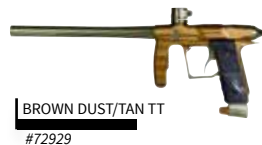
- .68 caliber electronic marker
- Trigger uses a microswitch for faster ROF
- Adjustable regulator built into the grip frame
- No external hoses
- Internal serviceable eyes
- Programmable electronics run on a 9-volt battery
- Simple 1 button bolt removal
- Clamping feedneck
- Easy lever ASA
- Meets or exceeds all applicable ASTM standards



BLACK DUST/LIME TT
#72882



BLACK DUST/RED TT
#72905



BROWN DUST/TAN TT
#72929



GREY DUST/ELECTRIC BLUE
#72912

» ENTRY LEVEL TOURNAMENT MARKER

PROTON MARKER

FEATURES

- 5 Firing Modes & 4 Tourney Modes
- Break-beam Eyes w/ Eye Shields
- Super Easy To Maintain
- Tool-less Engine Disassembly
- Recurve Trigger & Roller Bearings
- Redesigned Grip Frame
- Aggressive Body Milling And Styling
- Autococker Barrel Threads
- Cam-lock Clamping Feed Neck
- On/Off ASA w/ Purge



BLACKHAWK MFG
#93276



BLACKHAWK MFG MARKER

FEATURES

- Magfed marker accommodates both FSR's and regular paintballs
- Tank as stock
- No external hose
- Pic-a-tinny top rail
- Includes 13 cu HPA Air System
- Magazine hold 15 paintballs or First Strike
- Semi-Automatic Action
- Front and back sights
- Full Metal Receiver
- Soft grip
- Gun bag included

MAGAZINE - #93283



QUICK ACCESS BATTERY DOOR



TANK AS STOCK





BLACKHAWK
#72417

DELUXE W/ METAL FEEDNECK
#75456

» .68 CALIBER SEMI-AUTOMATIC PAINTBALL MARKER

BLACKHAWK MARKER

FEATURES

- Durable powder-coated receiver
- Stainless steel bottomline hose
- Removable ported barrel
- Replaceable barrel thread adapter
- Removable feedneck adapter
- High-Flow aluminum Air source adapter
- Modular design for easy customizing & upgrading
- Designed for use with CO2 or High Pressure Air
- Meets or exceeds all applicable ASTM standards

AVAILABLE IN 3 BUILD OUT CONFIGURATIONS



WHISKEY
#83109



TANGO
#83116



FOXTROT
#83123

SPECS:

- Action: Semi-Automatic
- Barrel: Removable 6" Ported
- Power: CO2 or High Output Compressed Air
- Construction: Aluminum/Polymer
- Effective Range: 125+ Feet



OLIVE
#72318

» .50cal PAINTBALL MARKER

COBRA .50cal MARKER

FEATURES

- 50 Caliber design for increased accuracy, efficiency and low impact
- Lightweight aluminum and polymer construction
- Designed for use with CO2 or High Pressure Air
- Removable ported barrel
- External velocity adjuster
- Ergonomic double trigger
- Clamping vertical feedneck
- Contoured wrap around grips
- Aluminum bottomline adapter
- Meets or exceeds all applicable ASTM Standards



BLACK
#72301



VSL

VALKEN / SWITCH LOADER

valken®

VSL

VALKEN / SWITCH LOADER



BLACK/BLACK

#86766



ONE BUTTON OPERATION



.68 TO .50 ARMS INCLUDED



QUICK SWITCH LID



POWERED BY 3 AA BATTERIES



CLICK-IN CAPACITY EXTENDER





BLACK/GREY
#86834



BLACK/BLUE
#85424



BLACK/RED
#85448



GREY/BLACK
#86773

SWITCH FROM .68cal TO .50cal IN SECONDS

VALKEN SWITCH LOADER

FEATURES

- Simple one button on/off operation
- Switch from .68 to .50 cal arm in seconds 1/8 Turn - Arms included
- Click in capacity extender - included
- Quick release shell with secondary lock – Tool-less disassembly
- Pulsing motor is gentle on fragile paint
- Quick switch lid
- Powered by 3 AA batteries - NOT INCLUDED

BALL CAPACITY:

.68 CALIBER

- Approx. 185 paintballs
- Approx. 200 paintballs (no loader floor)
- Approx. 235 paintballs w/ capacity extender kit
- Max 250 paintballs w/ capacity extender kit (no loader floor)

.50 CALIBER

- Approx. 485 paintballs
- Approx. 520 paintballs (no loader floor)
- Approx. 590 paintballs w/ capacity extender kit
- Max 625 paintballs w/ capacity extender kit (no loader floor)



BRUSHED METALLIC
#92033



CARBON
#92040



BLACK/RED
#92057

VSL ALLOY SERIES

FEATURES

- Simple one button on/off operation
- Switch from .68 to .50 cal arm in seconds 1/8 Turn - Arms included
- Click in capacity extender - included
- Quick release shell with secondary lock – Tool-less disassembly
- Pulsing motor is gentle on fragile paint
- Quick switch lid
- Powered by 3 AA batteries - NOT INCLUDED

BALL CAPACITY:

.68 CALIBER

- Approx. 185 paintballs
- Approx. 200 paintballs (no loader floor)
- Approx. 235 paintballs w/ capacity extender kit
- Max 250 paintballs w/ capacity extender kit (no loader floor)

.50 CALIBER

- Approx. 485 paintballs
- Approx. 520 paintballs (no loader floor)
- Approx. 590 paintballs w/ capacity extender kit
- Max 625 paintballs w/ capacity extender kit (no loader floor)



BLACK/BLACK
#88272



BLACK/BLUE
#88289



GREY/BLACK
#88319



BLACK/RED
#88302



BLACK/GREY
#88296



VSL SPEEDFEED

FEATURES

- VSL compatible
- SNAP-in quick switch
- Tool-less design
- Faster filling
- Less spillage



V-MAX PLUS LOADER

FEATURES

- Enhanced intuitive design
- 20+ balls per second
- 200 ball capacity
- Ultra lightweight
- Two 9 volt batteries
- Fast disassembly
- One touch on/off
- Quick change lid
- No tools needed
- Fast battery change



#72820

V-MAX +

LOADERS

BLACK/BLUE
#35092



BLACK/LIME
#79973



BLACK/RED
#35139



BLACK/BLACK
#35085

V-MAX PLUS SPEEDFEED

FEATURES

- Rubber fingers let paintballs fall in, but not out.
- Faster Reloading
- Easy to Install - Quick change lid hinge



V-LITE 200 ROUND LOADER

FEATURES

- The "V-lite" internal guide decreases ball jams and increase feed rate
- Instant upgrade over standard 200 round gravity fed loaders
- Durable heavy-duty polymer construction
- No batteries or motors for a simple "it just works" approach to paintball loaders
- Great for rental fleets as the user can achieve a better player experience without ball jams and higher rates of feed
- Excellent loader for mounted rental guns that rely on the gun "shake" to assist the hoppers feeding

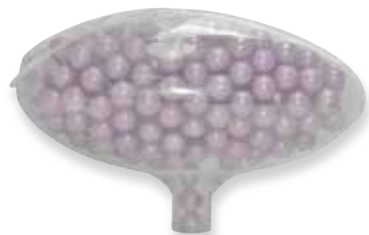


V-Lite Loader
#90422

LOADERS



BLACK
#41208



CLEAR
#41215

.50 CALIBER LOADERS



CLEAR
#73421
(Fits Cobra/Spyder)



GREY
#75500
(Fits Cobra/Spyder)



CLEAR
#78891
(Fits Tippmann/ENMey)

200 ROUND LOADERS



RIOT BLUE
#88944



RIOT GREEN
#88951



RIOT RED
#88975



RIOT GREY
#88968

VALKEN ZERO-G TANKS

FEATURES

- New Valken ZERO-G lightweight design 68 cu carbon fiber cylinder
- Cylinder proudly Made in the USA
- Durable gel coat finish
- DOT and TC compliant
- 5 year hydro test and 15 year life cylinder
- 850psi output pressure high flow regulator
- Dual burst disks-HP and LP for maximum safety
- Hardened aluminum, modular bonnet design
- Chrome micro gauge and fill nipple



PHANTOM BLACK
#88982

AIR



13/3000
#70758



48/3000
#49495

COMPRESSED AIR TANKS

FEATURES

- High quality 48 cubic inch aluminum cylinder
- 3000psi fill-pressure capacity with an 800psi output pressure
- 3000psi regulator has excellent flow, efficiency, and a stable pressure output
- PI certified
- Nickel-plated brass bonnet provides durable, long lasting gas interface
- High and low pressure burst disks for the highest level of safety



62/3000
#70765

CO2



CO2 TANKS

FEATURES

- 5 year hydro date
- TC Certified
- Burst disc pressure release
- Meets or exceeds ASTM standards
- High quality aluminum cylinder with industry pin valve

9oz.	#44919
12oz.	#45664
16oz.	#45671
20oz.	#45688
24oz.	#44902



12 GRAM CO2 CARTRIDGE

FEATURES

- 12 gram metal CO2 cartridges
- Works with CO2 magfed paintball pistols and pump markers
- One time use
- Available in packs of 100, 450, and 500

12ct	#86827
100ct	#62746
500ct	#62531



IDENTITY
PRO GOGGLE SYSTEM

valken[®]

IDENTITY
PRO GOGGLE SYSTEM



BLACK/GREY
#68915



BLUE/NAVY
#68922



GREEN/GREY
#68939



RED/GREY
#68946

 ENGINEERED FOR EXCELLENCE

IDENTITY GOGGLES

FEATURES

- UV & IR anti fog thermal lens
- Increased venting
- Enhanced acoustics
- Quick change lens
- Tri layer foam
- Improved coverage

TRI LAYER FOAM



QUICK CHANGE LENS SYSTEM



INCREASED VENTING



ENGINEERED FOR EXCELLENCE



BLACK
#68908

valken®

PROFIT



BLUE

#82959



RED

#82973



BLACK

#82942

INNOVATIVE CLICK-IN / TRI-LAYER FOAM

PROFIT SC GOGGLES

FEATURES

- Double strap allows for secure fit
- Dual-pane thermal (anti-fog) lens
- Patented lightning fast quick change lens system
- Removeable click in tri layer foam
- Increased air flow and ventilation
- Improved acoustics
- Reduced weight

DOUBLE STRAP



QUICK CHANGE LENS SYSTEM



REMOVEABLE CLICK-IN FOAM



EASY SNAP CLICK



valken®

MI
GOGGLE SYSTEM



OLIVE

#83000



TAN

#83017

MI-9 SC GOGGLES

FEATURES

- New integrated 3 strap safety system
- Safety - Full ASTM and CE certification and 3 strap system
- Lens - Thermal polycarbonate with anti-fog and hard coat lens treatment
- Foam - Click in replaceable dual layer foam for comfort
- Lens Change - Patented QuickChange lens release system
- Vision - Ultimate visibility, 160 degrees vertical and 260 degrees horizontal vision
- Mask - Robust high density injected polyethylene upper and flexible lower
- Visor - Sculpted visor for shade and reduced lens scratches
- Strap - Ultra-durable adjustable strap and retention system, integrated chin strap and over the head strap



BLACK

#82997

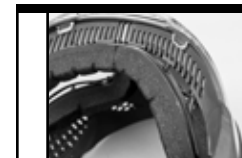
SCULPTED VISOR FOR SHADE



QUICK CHANGE LENS RELEASE



REMOVEABLE CLICK-IN FOAM





OLIVE

#48733

TAN

#48740

MARPAT

#41161

WOODLAND

#V353190



“DELUXE SPEC” GOGGLE

MI-7 GOGGLES

FEATURES

- Double-paned, thermal lens system with hardcoat lens treatment, fog and scratch resistant polycarbonate construction
- Dual-layer comfort foam--base layer SBR foam for impact absorption, exterior open-cell foam for sweat wicking and comfort
- Extreme protection--double layer foam located in both frame and ear
- Premium microstitch strap--extra durability, elasticity, and eye-catching embroidered logos
- Extreme vision--ultimate visibility, 160 degrees vertical and 260 degrees horizontal vision.

- Full ASTM and CE certification
- Robust high-density injected polyethylene
- Patented QuickChange lens-release system
- Optimized sculpted visor for improved ball deflection and shade
- Ultra-durable integrated strap and retention system for quick lens changes
- Each goggle individually inspected and clamshell packaged

BLACK

#V353136



BLACK

V353092

#66294

FULL HEAD COVER
(FITS ALL MI-SERIES GOGGLES)



MI-5 GOGGLES (BULK)

FEATURES

- Dual-Layer comfort foam--base layer SBR foam for impact absorption, exterior open-cell foam for sweat wicking and comfort
- Extreme protection--double layer foam located in both frame and ear
- Dual Anti-Fog, Hardcoat Lens treatment, fog and scratch resistant single polycarbonate lens construction
- Extreme Vision--ultimate visibility, 160 degrees vertical and 260 degrees horizontal vision.
- Full ASTM and CE certification
- Robust high-density injected polyethylene
- Patented QuickChange lens-release system
- Optimized sculpted visor for improved ball deflection and shade
- Ultra-durable integrated strap and retention system for quick lens changes



THERMAL

V353204



SINGLE

V353091

MI-3 GOGGLES

FEATURES

- Closed-cell, water-resistant SBR foam for easy washing and long rental life
- Extreme Vision - ultimate visibility, 160 degrees vertical and 260 degrees horizontal vision. See where you're walking! No more sprained ankles!
- Full ASTM and CE certification
- Robust high - density injected polyethylene
- Patented QuickChange lens release system
- Optimized sculpted visor for improved ball deflection and shade
- Ultra-durable integrated strap and retention system for quick lens changes

GOTCHA



valken®

GOTCHA



BLUE

#85127



ADRENALINE UNLEASHED

GOTCHA MARKER

FEATURES

- Serviceable for maintenance and repairs
- Fully enclosed internals with stainless steel hardware to prevent rusting
- Durable aluminum pump guide/barrel
- Traditional clamping feedneck, fits Valken .50cal loader
- Compatible with traditional 10 round .68cal tube (holds 14 balls)
- Picatinny sight rail
- Compatible with valken car stock
- Compatible with .68 barrel plug

RED

#85134

SMOKE

#86964



BLUE
#85158

GOTCHA TACTICAL MARKER

FEATURES

- Low impact serviceable .50 caliber marker
- Maximum 140fps low impact pump style marker
- Serviceable metal internals
- Fully enclosed internals
- Durable aluminum barrel
- Traditional clamping feedneck, fits Valken .50cal loader
- Compatible with traditional 10 round .68cal tube (holds 14 balls)
- Picatinny sight rail
- Includes Valken car stock



RED
#85165



SMOKE
#86971

TOP HEAD STRAP



RED
#85257

GOTCHA MI-3 GOGGLES

FEATURES

- Full ASTM and CE certification and 3 strap system
- Single polycarbonate with anti-fog and hard coat lens treatment
- Closed cell water resistant SBR foam for easy washing and long rental life
- Patented QuickChange lens release system
- Ultimate visibility, 160 degrees vertical and 260 degrees horizontal vision
- Robust high density injected polyethylene
- Sculpted visor for shade and reduced lens scratches
- Ultra-durable adjustable strap and retention system, integrated chin strap and over the head strap
- Top head strap helps secure goggle on smaller heads



BLUE
#85240

REVERSIBLE: RED/BLUE



ELASTIC SHOULDER STRAPS



VELCRO WAISTBAND



RED/BLUE REVERSIBLE

#85646

GOTCHA CHEST PROTECTOR

FEATURES

- Reversible youth sized chest protector - red and blue sides
- Removable dual gotcha pod belt (sold separately)
- Reduces impact increases paint breaking



BLACK

#85219

GOTCHA 120 ROUND LOADER

FEATURES

- Anti-jamming feature
- Spring loaded lid
- Holds up to 120 balls



BLACK

#85202

SMOKE

#85523

GOTCHA 100 ROUND PODS

FEATURES

- Holds 100 .50cal balls
- Spring loaded clear lid



#85196

GOTCHA WEB BELT

FEATURES

- Holds 2 Gotcha 100rd .50cal pods
- Standard 2" web belt with quick release buckle
- Elastic pod ejectors with rubber grip
- Heavy duty nylon web straps with TPR pull tabs
- Velcro straps attach to Gotcha chest protector (sold separately)



RED/WHITE

#87190

BLUE/WHITE

#87183

GOTCHA SHEMAGHS

FEATURES

- Offers neck protection for .50cal paintball
- Great for team identification by color (Blue/Red)
- Can be worn as a fashion accessory to keep warm
- Material: 100% Cotton
- 42"x42"



BLACK

#86995

GOTCHA FEED ELBOW FOR TUBES

FEATURES

- Holds 15 .50 cal paintballs
- Fits standard 10 round .68 cal tubes
- *10 Round tube not included with adapter



PURPLE

#V278081

Z BALLS

FEATURES

- Rubber like .50 caliber balls designed to simulate paintballs
- Perfect alternative to paintballs for target practice
- Safe for guns, barrels, and loaders
- Easily rinses clean with water
- 1000ct



GOTCHA PARTY PACK KIT

FEATURES

- Place settings and decorations with action packed designs
- Perfect for Paintball Parties! Comes with: 10 Plates, 10 Cups & 20 Napkins per kit



PHANTOM
AGILITY

valken[®]

PHANTOM
AGILITY

TUFF MESH FOREARMS



PADDED HALF GLOVE



ENGINEERED V-DRY MESH



✓ INDUSTRY LEADING INNOVATIVE PRODUCT DESIGN -
✓ CREATING QUALITY COMFORT FITTING SOFT GOODS

PHANTOM AGILITY V17 JERSEY

FEATURES

- V-Dry mesh
- Laser perforated venting
- Wrist protection cuffs
- Sublimated side mesh
- Tuff mesh forearms
- Forearm stretch panel
- Padded half glove
- NCPA approved

YOUTH	#85769
SMALL	#85738
MEDIUM	#85721
LARGE	#85714
XLARGE	#85745
2XLARGE	#85691
3XLARGE	#85707



GREY/BLACK

LASER PERF VENTILATION



2 WAY STRETCH CROTCH



ELASTIC ANKLE CUFFS



BLACK - JOGGER

INDUSTRY LEADING INNOVATIVE PRODUCT DESIGN -
CREATING QUALITY COMFORT FITTING SOFT GOODS

PHANTOM AGILITY PANTS - JOGGER CUT

FEATURES

- Ultra lightweight pants
- Laser perforated ventilation
- Simple pull waist adjustment
- Taped seams
- Zippered hand pockets
- Stretch Kevlar knees
- Microfiber with stretch leash
- Microfiber lined waist

XSMALL	#85394
SMALL	#85370
MEDIUM	#85363
LARGE	#85356
XLARGE	#85387
2XLARGE	#85332

ZIPPERED POCKETS W/ MICROFIBER



WAIST ADJUSTMENT



ADJUSTABLE ANKLE STRAPS



BLACK - STANDARD

INDUSTRY LEADING INNOVATIVE PRODUCT DESIGN -
CREATING QUALITY COMFORT FITTING SOFT GOODS

PHANTOM AGILITY PANTS - STANDARD CUT

FEATURES

- Ultra lightweight pants
- Laser perforated ventilation
- Simple pull waist adjustment
- Taped seams
- Zippered hand pockets
- Stretch Kevlar knees
- Microfiber with stretch leash
- Microfiber lined waist

XSMALL	#85325
SMALL	#85301
MEDIUM	#85295
LARGE	#85288
XLARGE	#85318
2XLARGE	#85264
3XLARGE	#85271



BLUE

- MEDIUM #77108
- LARGE #77115
- XLARGE #77122
- 2XLARGE #77139

GRAY

- SMALL #77030
- MEDIUM #77047
- LARGE #77054
- XLARGE #77061
- 2XLARGE #77078
- 3XLARGE #77085
- 4XLARGE #77092

RED

- MEDIUM #77146
- LARGE #77153
- XLARGE #77160
- 2XLARGE #77177

FATE EXO JERSEY

FEATURES

- Ultra-lightweight and breathable mesh construction throughout
- Low-profile rib-knit cuffs and collar are extremely comfortable
- Industry dominating mold-breaking graphic excellence

ADJUSTABLE VELCRO WAISTBELT



BARREL SWAB POCKETS



VELCRO ANKLE STRAPS



BREATHABLE POLYESTER MATERIAL



FATE EXO PANTS

FEATURES

- Ultra durable, breathable polyester material
- Velcro closure bottom to adjust length
- Stretch panels in crotch allows flexibility
- Built in adjustable velcro waistbelt
- Heavy duty nylon knees
- Affordable and durable paintball specific pants

- 2XSMALL #84878
- XSMALL #84953
- SMALL #84939
- MEDIUM #84922
- LARGE #84915
- XLARGE #84946
- 2XLARGE #84861
- 3XLARGE #84885
- 4XLARGE #84892
- 5XLARGE #84908



TIGER STRIPE

MEDIUM #77542
LARGE #77559
XLARGE #77566
2XLARGE #77573



V-CAM

SMALL #88340
MEDIUM #77504
LARGE #77511
XLARGE #77528

2XLARGE #77535
3XLARGE #88357
4XLARGE #88364



WOODLAND

SMALL #77436
MEDIUM #77443
LARGE #77450
XLARGE #77467

2XLARGE #77474
3XLARGE #77481
4XLARGE #77498



TIGER STRIPE

MEDIUM #77849
LARGE #77856
XLARGE #77863
2XLARGE #77870



V-CAM

SMALL #88401
MEDIUM #77801
LARGE #77818
XLARGE #77825
2XLARGE #77832
3XLARGE #88418
4XLARGE #88425



WOODLAND

SMALL #77733
MEDIUM #77740
LARGE #77757
XLARGE #77764
2XLARGE #77771
3XLARGE #77788
4XLARGE #77795

KILO JERSEY

FEATURES

- Hybrid of materials ripstop fabric and full camo sublimated breathable moisture wicking fabric
- Sleeve pockets on both arms
- Velcro panels for Identification and patches
- Rib knit cuffs and collar
- Ripstop reinforced shoulders, elbows and forearms

KILO PANTS

FEATURES

- Ripstop fabric - 65% Polyester 35% Cotton
- Drawstring inner waist for adjustment
- Articulated knees
- Low profile cargo pockets
- Deep front hand pockets
- Concealed zippered front pockets
- Ankle closure blouse ties
- Rear Pockets

TANGO



TIGER STRIPE

MEDIUM #77696
 LARGE #77702
 XLARGE #77719
 2XLARGE #77726

WOODLAND

SMALL #88340
 MEDIUM #77504
 LARGE #77511
 XLARGE #77528

SHORT SLEEVE V-CAM

MEDIUM #86285
 LARGE #86292
 XLARGE #86308

TANGO JERSEY

FEATURES

- Hybrid of materials ripstop fabric and full camo sublimated breathable moisture wicking fabric
- Integrated articulating elbow pads
- Zippered sleeve pockets on both arms
- Velcro panels for Identification and patches
- Built in shoulder padding for vests, harnesses or plate carriers
- Adjustable velcro wrist closures
- Ripstop reinforced shoulders, elbows and forearms
- Zippered high collar

V-CAM

SMALL #88371
 MEDIUM #77658
 LARGE #77665
 XLARGE #77672

2XLARGE #77689
 3XLARGE #88388
 4XLARGE #88395



TANGO



TIGER STRIPE

MEDIUM #77993
 LARGE #78006
 XLARGE #78013
 2XLARGE #78020

V-CAM

SMALL #77887
 MEDIUM #77894
 LARGE #77900
 XLARGE #77917
 2XLARGE #77924
 3XLARGE #77931
 4XLARGE #77931

TANGO PANTS

FEATURES

- Ripstop fabric - 65% Polyester 35% Cotton
- Drawstring inner waist for adjustment
- Integrated knee padding for extra durability
- Low profile cargo pockets
- Deep front hand pockets
- Dual concealed zippered front pockets
- Stretch areas above knees and lower back
- Utility rear pockets
- Adjustable knee pad placement straps
- Zippered ankle and calf pockets
- Front thigh velcro pockets
- Adjustable velcro ankle closure with boot zippers

V-CAM

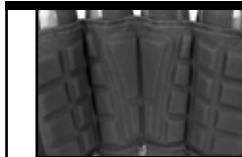
SMALL #88432
 MEDIUM #77955
 LARGE #77962
 XLARGE #77979
 2XLARGE #77986
 3XLARGE #88449
 4XLARGE #88456



ELASTIC POD LOOPS



INTEGRATED PADDING



DOUBLE VELCRO BELT



BLACK

#91739

AGILITY 4+7 HARNESSES

FEATURES

- Lightweight design, Tactile hypalon tabs
- Double velcro adjustable comfort belt system
- Seven retractable elastic outer pod loops
- Four integrated auto ejector pod straps
- Fits waist size 28" - 38", Extensions available
- Increased strength pod flap velcro
- Zippered pocket & hidden securely between the inner and outer belt

AUTO EJECTOR STRAPS



VELCRO BELT SYSTEM



EXTRA POD LOOPS



HEAVY DUTY WEBBING



FATE 4+3 HARNESSES

FEATURES

- Heavy duty webbing pod flaps
- Auto ejector straps
- Belt system holds harness in place with little bounce
- 3 extra pods in between each pod



BLACK

#17135

HARNESSES



CRUSADE 3+6 HARNESS

FEATURES

- B.O.A. Belt System (Bi-Layer Optimal Adjustment)
- Double Velcro closure – inner belt is extra wide and lined with neoprene for comfort
- Outer belt is ribbed elastic with TPR tab for quick release
- Both have elastic with stepped velcro to be extra snug and completely adjustable
- Ergonomic lumbar padding – compression molded with channels that let the pack flex with your movements while allowing your back to breathe easy
- Zippered pocket – hidden securely between the inner and outer belt to carry your dollars and keys
- Stay-open pod sleeves – slick inside so you can get your pods out without a snag, tournament legal padding on the outside to pick up those extra bounces.
- Extra velcro on the pod sleeves make sure all sizes of pods fit securely.
- Elastic ejector loops
- Roll-away pod loops – velcro when rolled to stay out of the way
- Large strap pull tabs – are easy to grab and made of grippy, textured TPR
- Cutting-edge, progressive graphics
- Waist fits 28”-38”. Extensions available for larger sizes



BLACK

#82300

HARNESSES



V-TAC 6+1 and 4+1 HARNESS

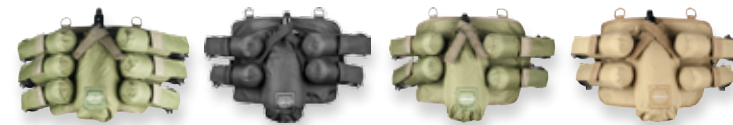
FEATURES

- Tank pouch includes elastic opening and dual velcro retention straps
- Large 4 inch webbing belt system with elastic to hold the harness in place
- Pod holders feature heavy duty velcro wrap closures for multiple size pods
- Constructed of 600D with doubled-up webbing pull tabs
- Sewn in 4 D-rings for the addition of suspenders
- Velcro flap accessory pouch
- Fits 100 - 160 round pods
- Fits up to 90ci compressed air tank
- One size fits most



6+1 - BLACK

#28629



6+1 - OLIVE

#69745

4+1 - BLACK

#28612

4+1 - OLIVE

#69721

4+1 - TAN

#69738

HARNESSES



V-TAC 2-POD and 3-POD WEB BELT

FEATURES

- Standard 2" web belt with quick release buckle
- Stay-open pod sleeves
- Elastic pod ejectors with rubber grip
- Heavy-duty nylon web straps with TPR pull tabs for quick access to pods

UNIVERSAL TANK POUCH

FEATURES

- Mounts to molle either vertically or horizontally
- Adjustable for compressed air tanks 45ci - 90ci
- Adjustable for CO2 tanks 20oz - 24oz

MOLLE



MAG POUCH

FEATURES

- Attaches to any molle
- Adjustable elastic strap with pull tab
- Stackable front molle webbing
- Constructed from durable 600 denier fabric

DUMP POUCH

FEATURES

- Attaches to any molle
- Holds empty magazines
- Folds away into smaller size
- Elastic draw string top



PHANTOM
AGILITY

valken[®]

PHANTOM
AGILITY

PHANTOM AGILITY ELBOW PADS

FEATURES

- Compression fit, full motion 4 way stretch fabrics
- Eva impact absorption padding with integrated flex points
- Stretch mesh to allow breath ability and fast drying
- Snug fit to keep your pads in place
- Jacquard elastic upper strap
- Reinforced synthetic suede palm
- Compatible with Phantom Agility Gloves



BLACK

SMALL	#88845
MEDIUM	#88838
LARGE	#88821
XLARGE	#88852
2XLARGE	#88814



BLACK
SMALL #88890
MEDIUM #88883
LARGE #88876
XLARGE #88906
2XLARGE #88869

PHANTOM AGILITY KNEE PADS

FEATURES

- Compression fit, full motion 4 way stretch fabrics
- Eva impact absorption padding with integrated flex points
- Stretch mesh to allow breath ability and fast drying
- Snug fit to keep your pads in place
- Jacquard elastic upper strap and adjustable thigh strap



PHANTOM AGILITY SLIDE SHORTS

FEATURES

- Compression fit, full motion 4 way stretch fabrics
- Eva impact absorption padding with integrated flex points
- Stretch mesh to allow breath ability and fast drying
- Snug fit to keep your pads in place
- Built in groin pad

BLACK
S/M #88937
L/XL #88920
2XL/3XL #88913





BLACK
SMALL #62029
MEDIUM #62012
LARGE #62005
XLARGE #62036

PHANTOM AGILITY GLOVES

FEATURES

- Stretch mesh fabric for breathability and flexibility
- Silicone prints for extra grip in contact areas
- Ultra lightweight design
- Works in tandem/conjunction with all forearm/elbow pads
- 4 way stretch mesh fabric



OLIVE
SMALL #59548
MEDIUM #59531
LARGE #59524
XLARGE #59555
2XLARGE #59517



TAN
SMALL #59593
MEDIUM #59586
LARGE #59579
XLARGE #59609
2XLARGE #59562

ZULU GLOVES

FEATURES

- Breathable Material that is lightweight yet durable
- Kevlar Covered Hardshell Knuckles
- 4 Way Stretch Articulated Joints on the small, ring, middle, and index fingers
- Soft Sweat Absorbing pad on the thumb
- Double Stitched Padding on the palm
- Silicon Grip Pads on the upper palm and index finger
- Velcro Closure Adjustment



BLACK
SMALL #59494
MEDIUM #59487
LARGE #59470
XLARGE #59500
2XLARGE #59463



GLOVES



OLIVE

SMALL #62067
MEDIUM #62050
LARGE #62043
XLARGE #62074



TAN

SMALL #62104
MEDIUM #62098
LARGE #62081
XLARGE #62111



BLACK

SMALL #62029
MEDIUM #62012
LARGE #62005
XLARGE #62036



SIERRA GLOVES

FEATURES

- Synthetic leather palm for durability and tactility
- Breathable stretch material on the back of the hand
- Crosshatched Silicon grip areas on the palms
- Reinforced trigger finger

GLOVES



OLIVE

SMALL #48580
MEDIUM #48573
LARGE #48566
XLARGE #48597



TAN

SMALL #48627
MEDIUM #48610
LARGE #48603
XLARGE #48634

PLASTIC BACK FULL-FINGER GLOVES

FEATURES

- Breathable padded mesh construction on back of the hand
- Flexible plastic armor on the main part of hand
- Full-finger design for full protection
- Abrasion resistant padded palm
- Velcro adjustable elastic wrist closure



BLACK

SMALL #48542
MEDIUM #48535
LARGE #48528
XLARGE #48559



OLIVE

XS/S #48696
M/L #48672
XL/2XL #48689



TAN

XS/S #48726
M/L #48702
XL/2XL #48719



BLACK

XS/S #48665
M/L #48641
XL/2XL #48658

PLASTIC BACK HALF-FINGER GLOVES

FEATURES

- Breathable padded mesh construction on back of the hand
- Flexible plastic armor on the main part of hand
- Half-finger design keeps a majority of your hands protected while allowing your fingers to feel the trigger better.
- Abrasion resistant padded palm
- Velcro adjustable elastic wrist closure

STRAP ON AND GO



DUAL LAYER FOAM



CAN BE WORN UNDER CLOTHING



OVERSHIELD PROTECTIVE PADDING

FEATURES

- Great for Haunt employees and referees
- Paintball impact protection - Dual layer foam
- Balls break on the harder outer layer suit while the softer under layer protects the employees from impacts
- One size fits most! Can be worn over clothing with more layers worn over top
- No assistance needed to get dressed
- Strap on and go
- Easy to clean closed cell foam
- Cost efficient



BLACK

#88807



BLACK
 XSMALL #69745
 S/M #32213
 L/XL #32206
 2XL/3XL #32183
 4XL/5XL #32190

IMPACT CHEST PROTECTOR

FEATURES

- Strategically cut and perforated EVA core padding
- Delivers incredible protection, breathability, and flexibility
- Stretch mesh vents run under the arms and along the sides helping keep cool
- Breathable, moisture wicking material

PROTECTIVE



MARPAT/BLACK
 #23457

V-TAC REVERSIBLE CHEST PROTECTOR

FEATURES

- Closed-cell foam padding for protection
- Elastic & velcro waist for a wide range of adjustment
- Flexible contoured stitching let the vest curve to fit your body
- Elastic shoulder straps
- Thin & lightweight design
- Screen printed V-TAC logo on front
- One size fits most



OLIVE
 #66324

TAN
 #66317

BLACK
 #66300

VALKEN TACTICAL ELBOW PADS

FEATURES

- Made of durable nylon and high impact polymer, soft cushion pad on inner side.
- Extremely light and flexible, provides excellent protection and shock absorption.
- Moves with the body movement and player action.
- EVA high-density foam provide excellent shock absorption
- Internal lycra CoolMax keeps the elbow pads dry providing a comfortable feeling.
- Adjustable velcro strap fits for various size
- One size fits most

PROTECTIVE



OLIVE
 #62562

TAN
 #62555

BLACK
 #62548

VALKEN TACTICAL KNEE PADS

FEATURES

- Made of durable nylon and high impact polymer
- Soft cushion pad on inner side
- Extremely light and flexible, provides excellent protection and shock absorption.
- Moves with the body movement and player action.
- The X type TPU shell, can effectively absorb the impact from different angles
- EVA high-density foam provide excellent shock absorption
- Internal lycra CoolMax keep knee pads dry and provide the comfortable feeling.
- Adjustable velcro strap fits for various sizes
- One size fits most

PROTECTIVE



TIGER STRIPE

#86261

V-CAM

#86254

WOODLAND

#86278



TIGER STRIPE

#86230

V-CAM

#86223

WOODLAND

#86247

OLIVE

#19726



BLACK

#23105



KILO HEADBANDS & HEADWRAPS

FEATURES

- Available in matching Camo to Kilo and Tango Gear
- Durable ripstop fabric
- Full mesh fabric cover for headwraps
- Sweat absorption panel with padding
- Full-length tie in the back for best fit

V-TAC NECK PROTECTORS

FEATURES

- 1/4in Neoprene construction is soft and protects
- Contoured to fit your neck
- Perforated venting
- Velcro closure
- One size fits most



BLACK

#92125

PHANTOM AGILITY GEAR BAG

FEATURES

- Individual compartments for the ultimate in gear protection and organization
- Customizable and removable top panel that doubles as an internal patch panel for all of your collectors
- Built-in luggage tag ID holder & external loop panel to customize the bag with your favorite patches
- Rugged off-road wheels and push-button telescoping handle
- Separate top-half inner pockets keep clean gear separate from the rest of your equipment
- 3M reflective logo print



BLACK
#92088

PHANTOM AGILITY DUFFEL BAG

FEATURES

- Separate eye protection and footwear end pockets
- Large main compartment to accept any size load out with 4 additional internal equipment pockets keeps your gear organized and protected
- Padded wide shoulder-strap evenly distributes the weight for a well balanced carry
- 4 external zipper pocket for quick access to tool and accessories
- 3M reflective logo prints



BLACK
#92071



PHANTOM AGILITY BACKPACK

FEATURES

- Fleece lined sunglasses pocket, doubles with a quick-access catch-all pocket
- External loop panel to customize the bag with your favorite patches
- External side laptop access (up to 15")
- Internal iPad and documents pockets
- Dual stretch mesh water bottle pockets
- Mobile office organizer accommodates pens, back up batteries, hard drives and a quick key clip
- 3M reflective logo prints.



BLACK
#78068



KILO COMPACT BACKPACK

FEATURES

- Compact day pack
- Hydration compatible
- Side and vertical compression straps
- Air mesh padded adjustable shoulder straps
- Molle attachment compatible
- 2 small organizational pockets
- 2 large organizational pockets
- 600d PCV coated fabric for weather resistance

REINFORCED OFF-ROAD WHEELS



WATER RESISTANT ZIPPERS



EASY CARRY HANDLES



BLACK

#85400

AGILITY ROLLING BAG

FEATURES

- Rolling 80 liter gear bag
- Durable ballistic nylon exterior
- Taped water resistant zippers
- Reinforced off-road wheels
- Internal mesh pockets and compression straps
- Identification window pocket
- Telescoping handle for easy navigation



BLACK

#92095

PHANTOM AGILITY GOGGLES CASE

FEATURES

- Protects your goggle from scratching the lens and deforming the soft face and soft ear protection
- Separate lens pocket
- Air mesh construction allows your goggles to breath and dry out inside the zipped case
- Fits perfectly inside the Valken phantom rolling gear bag goggle compartment



BLACK

#V353233

UNIVERSAL LENS CASE

FEATURES

- Neoprene lens dividers accommodate up to (4) lenses
- Velour-lined interior protects lenses against damage and vibration
- Faux-carbon exterior is scratch resistant and stylish

CASES



BLACK
#92118



BLACK
#92101

PHANTOM AGILITY LOADER CASE

FEATURES

- Protects your loader during transport
- Unique stretch mesh internal ceiling conforms to any size or configured loader
- Fits perfectly inside the Valken phantom rolling gear bag loader compartment

PHANTOM AGILITY TANK CASE

FEATURES

- Protects your tank during transport
- Fits most sized tanks available
- Adjustable Velcro divider with separate regulator spares pocket
- Fits perfectly inside the Valken phantom rolling gear bag tank compartment

ACCESSORIES



BLACK
#70215



OLIVE
#70239



CLEAR
#70222

VALKEN TACTICAL BALL HAULER

FEATURES

- Reload your hopper and pods quickly with ease
- Molded handle makes it easy to hold and pour
- Spill less paint and save money
- Clear friction lids for top and spout
- Lower center of gravity to prevent spills



BLUE
#35030



CLEAR
#35047



OLIVE
#35054



RED
#35061



SMOKE
#35078

BALL HAULERS

FEATURES

- Reload your hopper and pods quickly with ease
- Molded handle makes it easy to hold and pour
- Spill less paint and save money
- Clear friction lids for top and spout
- Lower center of gravity to prevent spills

ACCESSORIES



#76071

"FLICK LID" PODS

FEATURES

- Secure and reliable locking flip-top lid tube
- Smooth surface allows for easy cleaning after a day's play
- Will fit any standard size harness
- 140-round capacity
- Spring-lid

BLACK	#28766
BLUE	#18415
CLEAR	#18422
RED	#18446
SMOKE	#18453

100 ROUND MULTI-POD (.68 to .50 cal)

FEATURES

- 100 count .68 cal pod
- Can be cut down to hold (50) .68 cal paintballs
- Also can be used for .50 cal paint

ACCESSORIES



LOADER/POD SWAB
#29244



BARREL SWAB KIT
#28933



SINGLE BARREL SWAB
#28940



#75081

VALKEN SWABS

FEATURES

- Super absorbent material leaves no paint or residue behind

.50 CAL SQUEEGIE

FEATURES

- Jerk-through clean .50cal barrel
- End-locking storage
- Smaller size storage

ACCESSORIES



BLACK
#69424



TAN
#69448



OLIVE
#69431



RENTAL
#23037



OLIVE
#72486



BLACK
#72462



TAN
#72493

BARREL COVERS

FEATURES

- Polyester construction with heavy-duty reinforced front
- Retention bungee cord with adjustable spring clip
- Screened Valken Tactical Logo

TANK COVERS

FEATURES

- Fits 68ci tanks
- Neoprene construction with Valken Tactical Logo

ACCESSORIES



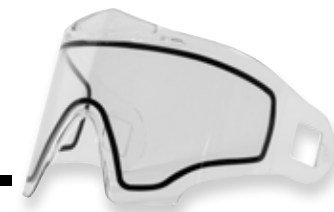
POLARIZED
#75630

FITS PROFIT/IDENTITY GOGGLES

POLARIZED THERMAL GOGGLE LENS

FEATURES

- Compatible with both Valken Profit and Identity Goggles
- Dual-Pane Anti-Fog Lenses
- Polarized coating on interior lens for scratch protection
- Wide field of view



CLEAR
#V353128



SMOKE
#V353202



YELLOW
#V353130

FITS MI-SERIES/ANNEX GOGGLES

MI-SERIES THERMAL GOGGLE LENS

FEATURES

- Dual-pane construction eliminates fogging
- Colors and Gradients available for different lighting conditions

ACCESSORIES

FIELD

REMOTE MICROLINE W/ SLIDE CHECK
#79164



REMOTE COIL W/ PROCONNECT
#49532



REMOTE LINES

REMOTE COIL W/ QUICK DISCONNECT
#28742



REMOTE COIL W/ QD AND SLIDE CHECK
#28759



FAST LOCKING FEEDNECK



CLOSED BOLT DESIGN



BLACK
#49464



V-TAC RM-1 MARKER

FEATURES

- Quick push pin dis-assembly
- Smooth body design for easy wipe down
- Rear removable valve system for easy cleaning
- Closed bolt design helps to eliminate paint and dirt from entering bolt system
- External lubricating hole (you can put a drop of oil into a hole on the side of the bolt to lubricate the valve system)
- Reinforced asa adapter inside grip frame
- Fast locking feed neck with safety notch
- Built in barrel blocking device
- External ball detent (easy to clear and replace)

GUN MOUNT
#52235





HIGHLIGHTER/BLACK

MEDIUM #53249
 LARGE #53232
 XLARGE #53256
 2XLARGE #53218
 3XLARGE #53225

VALKEN REFEREE JERSEYS

FEATURES

- Clear referee identification
- Ultrabright fabric
- Breathable mesh construction
- Low profile rib cuffs
- Pullover hoody front style pocket

FIELD



CAMO

S/M #83383
 L/XL #83390
 2XL/3XL #83406

V-TAC CAMO COVERALLS

FEATURES

- Disposable woodland camouflage coveralls for rental player use at your field.
- Lightweight, breathable material will protect your players from ruining their clothes underneath.
- Features a zippered front, collar, and elastic wrist and ankle cuffs.
- Printed Valken logo on front left hand side.

SHOOTING RANGE #57308	NO SHOOTING #22269
BREAK DOWN BOXES #57285	GOGGLES ON #22252
TRASH HERE #57315	BARREL COVERS #22238
CHECK-IN #57292	AIR FILL STATION #22214
BARREL PLUGS #22221	CHRONO STATION #22245



FIELD SIGNS

20' x 300' HYBRID #V271008
20' x 300' #V271005
12' x 300' #V271006



NETTING

FIELD



THE UNIT

#35900

SCUBA

#32749

FILL STATION



#61503

TANK LOCK

***WHATEVER
IT TAKES.***

Designed in the USA. "Valken" and the "Valken Whatever It Takes" are trademarks of Valken Sports, Inc. ©2017 Valken Sports, Inc. All Rights Reserved. 1 Hawk Ct. Swedesboro, NJ 08085

